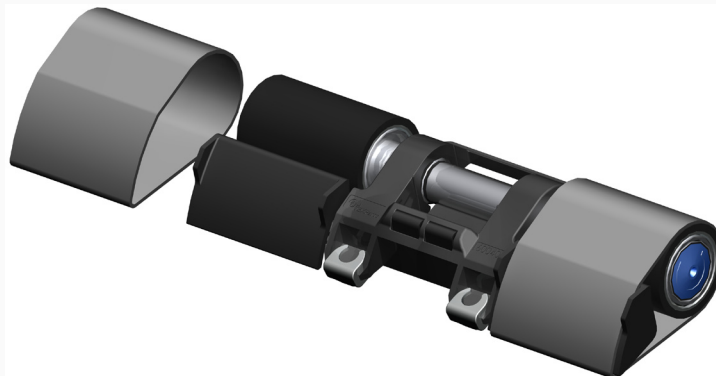


Top apron cradle OH



Top apron cradles OH

Top apron cradles OH are suitable for weighting arms in cotton and worsted ring spinning machines as well as in roving frames.

The present information sheet gives a summary of the possible application ranges of the various OH types, ratings for the top apron cradles, distance clips and top aprons and indicates the actually valid TEXParts reference numbers.

This manual must be handed over to persons using the described equipment. Wrong use of the equipment can only be avoided if the manual is always available!

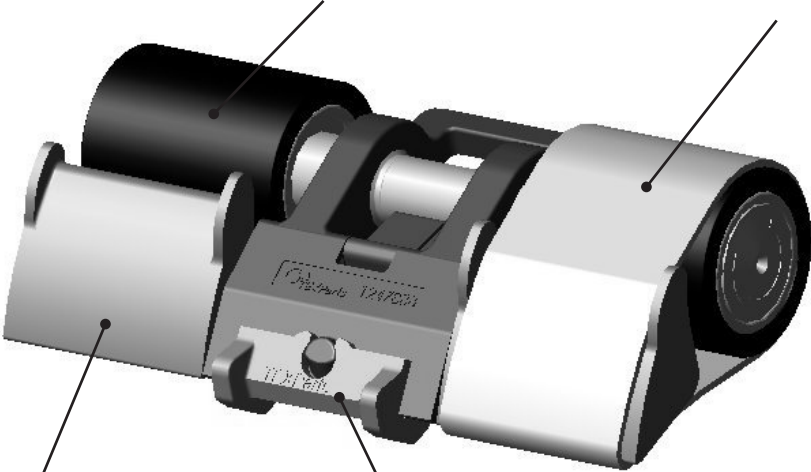
The respective copies can be ordered from TEXParts, if required.

Content	Page
The OH -System	2
Top apron cradles OH for weighting arms of series PK 3000, PK 2000 and PK 2100	3
Top apron cradles OH for weighting arms of series PK 5000 and PK 1550 / PK 1640	7
Top apron cradles OH for weighting arms of series PK 1500	9
Top apron cradles OH for weighting arms PK 6000	11
Top apron cradles OH for weighting arms PK 1601 and PK 1660	12

The OH-System

Apron top rollers with special sleeve or cot.
For apron top rollers with cot:
Ref. Nos. are for top rollers without cot. Cot quality according to customers' request.

The list of top aprons is shown on page 13.
Top aprons have to be ordered separately.



Top apron cradle with individual tensioning of the aprons.
This constructional design of the top apron cradle allows the replacement of the apron on the installed cradle without removal or dismantling of the top apron cradle itself.

The distance clips OLC are not included in the standard supply of top apron cradle and have to be ordered separately.
When ordering distance clips OLC a set of 3 different sizes will be supplied per top apron cradle.

Top apron cradles OH
for weighting arms of series PK 3000, PK 2000 and PK 2100

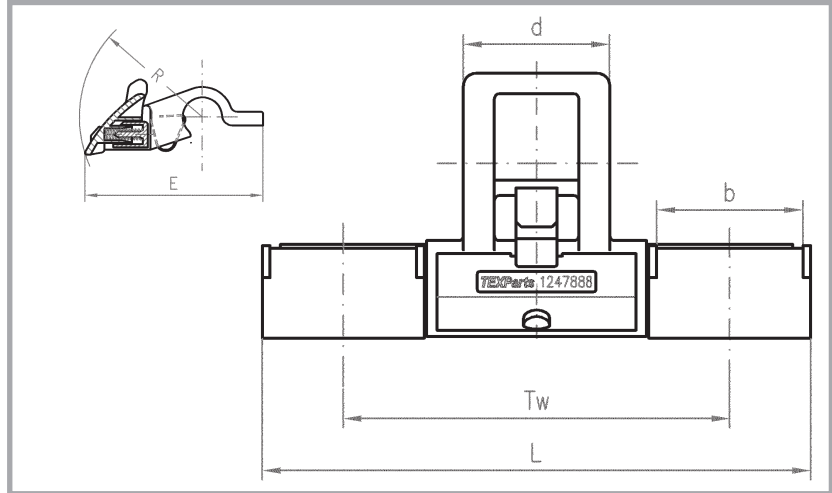
No. 83 · 15e - 01/07

Page 3/13

Short top apron cradle OH 2022
Application:
Cotton ring spinning machine

 Draft systems with **TEXParts weighting arms** PK 3025, PK 3035, PK 2025, PK 2035, PK 2055, PK 2065, PK 2130, PK 2135, PK 2155 and PK 2165.

For spinning cotton, man-made fibres or blends of both types up to 40 mm fibre length.

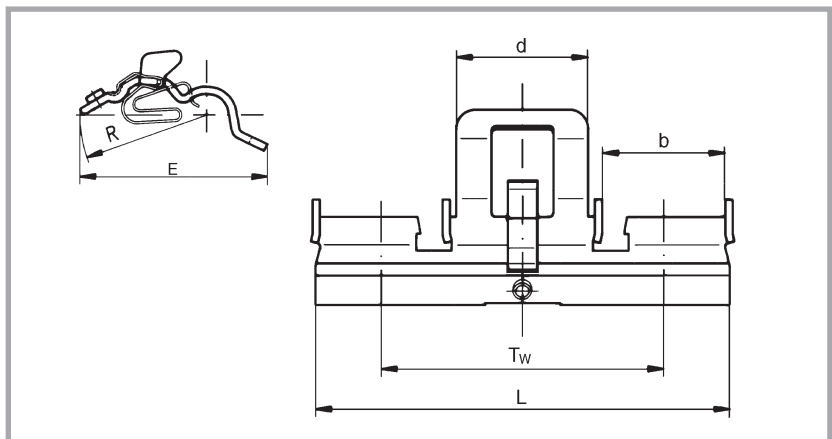

Short top apron cradle OH 2022
Short top apron cradle OH 2022

Types Ref. no.	Dimensions in mm						Top rollers LP 1003 ¹⁾	Top rollers LP 1002 ²⁾	Top aprons
	Tw	L	b	d	R	E			
OH 2022-1247 888	68,4	99,8	28,4	28,4	35	51,4	LP 1003-1256 596	LP 1002-1249 324	PR 28
OH 2022-1247 887	75	106,4	28,4	28,4	35	51,4	LP 1003-1256 597	LP 1002-1248 379	PR 28
OH 2022-1247 889	82,5	113,9	28,4	28,4	35	51,4	LP 1003-1256 598	LP 1002-1248 382	PR 28

Short top apron cradle OH 62
Application:
Cotton ring spinning machine

 Draft systems with **TEXParts weighting arms** PK 2025, PK 2035, PK 2055, PK 2065, PK 2130, PK 2135, PK 2155 and PK 2165.

For spinning cotton, man-made fibres or blends of both types up to 40 mm fibre length.


Short top apron cradle OH 62
Short top apron cradle OH 62

Types Ref. no.	Dimensions in mm						Top rollers LP 1003 ¹⁾	Top rollers LP 1002 ²⁾	Top aprons
	Tw	L	b	d	R	E			
OH 62-0962 841	90	125	32,4	50	35	53	--	LP 1002-1256 897	PR 32

¹⁾ Apron top rollers with special sleeves.

²⁾ Top rollers for use as apron top rollers with cot. (Ref.nos. are for top rollers without cot). Cot quality according to customers' request. Diameter over cot = Ø 25 mm.

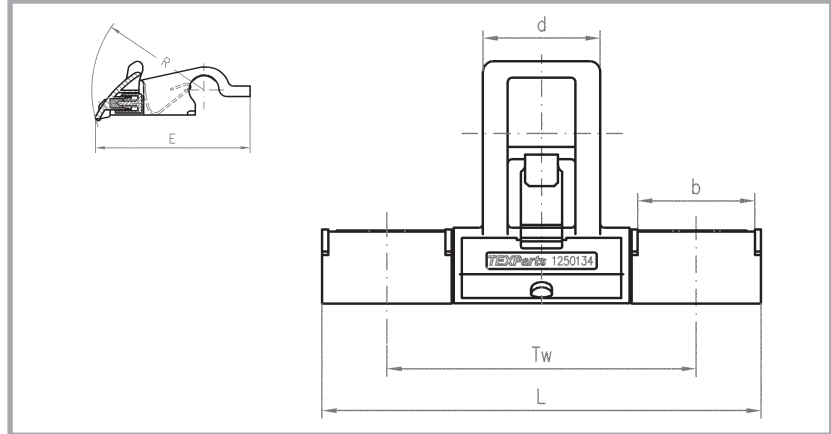
Medium top apron cradle OH 2042

Application:
Cotton ring spinning machine

Draft systems with **TEXParts weighting arms**

PK 3025, PK 3035, PK 2025,
PK 2035, PK 2055, PK 2065,
PK 2130, PK 2135, PK 2155 and
PK 2165.

For spinning cotton, man-made fibres or blends of both types up to 54 mm fibre length.



Medium top apron cradle OH 2042

Medium top apron cradle OH 2042

Types Ref. no.	Dimensions in mm						Top rollers LP 1003 ¹⁾	Top rollers LP 1002 ²⁾	Top aprons ³⁾
	Tw	L	b	d	R	E			
OH 2042-1250 133	68,4	99,8	28,4	28,4	42,5	58,9	LP 1003-1256 596	LP 1002-1249 324	PR 2813
OH 2042-1250 134	75	106,4	28,4	28,4	42,5	58,9	LP 1003-1256 597	LP 1002-1248 379	PR 2813

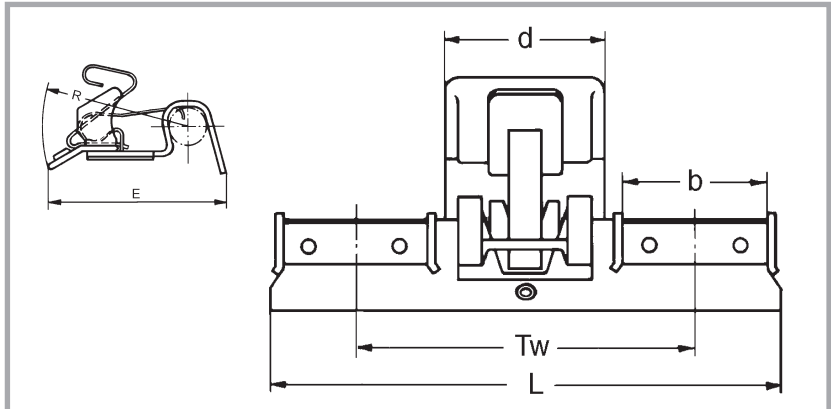
Medium top apron cradle OH 132

Application:
Cotton ring spinning machine

Draft systems with **TEXParts weighting arms**

PK 2025, PK 2035, PK 2055,
PK 2065, PK 2130, PK 2135,
PK 2155 and PK 2165.

For spinning cotton, man-made fibres or blends of both types up to 54 mm fibre length.



Medium top apron cradle OH 132

Medium top apron cradle OH 132

Types Ref. no.	Dimensions in mm						Top rollers LP 1003 ¹⁾	Top rollers LP 1002 ²⁾	Top aprons ³⁾
	Tw	L	b	d	R	E			
OH 132-0963 700 ⁴⁾	68,4	103	28,4	30	42,5	52,5	LP 1003-1256 596	LP 1002-1249 324	PR 283
OH 132-0963 660 ⁴⁾	75	114	32,4	35	42,5	52,5	LP 1003-1256 597	LP 1002-1248 601	PR 323
OH 132-0963 671	82,5	122	32,4	35	42,5	52,5	LP 1003-1256 598	LP 1002-1256 896	PR 323

¹⁾ Apron top rollers with special sleeves.

²⁾ Top rollers for use as apron top rollers with cot. (Ref.nos. are for top rollers without cot). Cot quality according to customers' request. Diameter over cot = Ø 25 mm.

³⁾ Top aprons must be ordered as separate items.

⁴⁾ Delivery until using-up of stock.

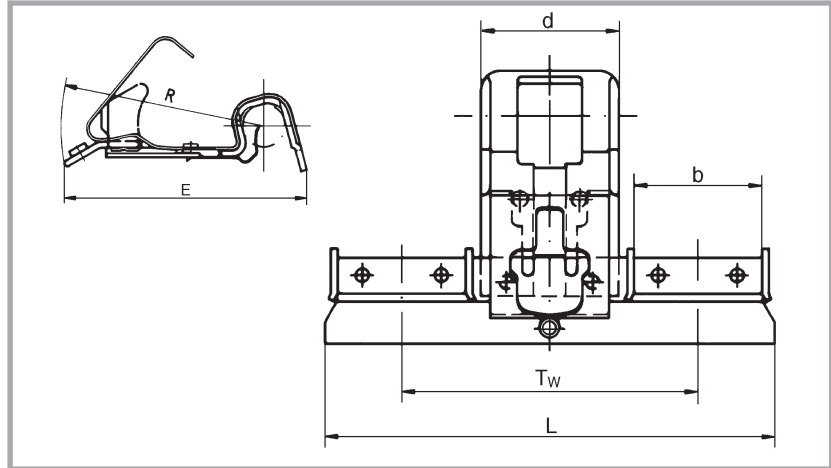
Long top apron cradle OH 122

Application:
 Cotton ring spinning machine

Draft systems with **TEXParts weighting arms**

PK 2025, PK 2035, PK 2055,
 PK 2065, PK 2130, PK 2135,
 PK 2155, PK 2165.

For spinning cotton, man-made fibres or blends of both types up to 60 mm fibre length.



Long top apron cradle OH 122

Long top apron cradle OH 122

Types Ref. no.	Dimensions in mm						Top rollers LP 1003 ¹⁾	Top rollers LP 1002 ²⁾	Top aprons ³⁾
	Tw	L	b	d	R	E			
OH 122-0963 495	68,4	103	28,4	35	58,3	69	LP 1003-1256 596	LP 1002-1249 324	PR 028
OH 122-0963 500	75	114	32,4	35	58,3	69	LP 1003-1256 597	LP 1002-1248 601	PR 032
OH 122-0963 511	82,5	122	32,4	35	58,3	69	LP 1003-1256 598	LP 1002-1256 896	PR 032

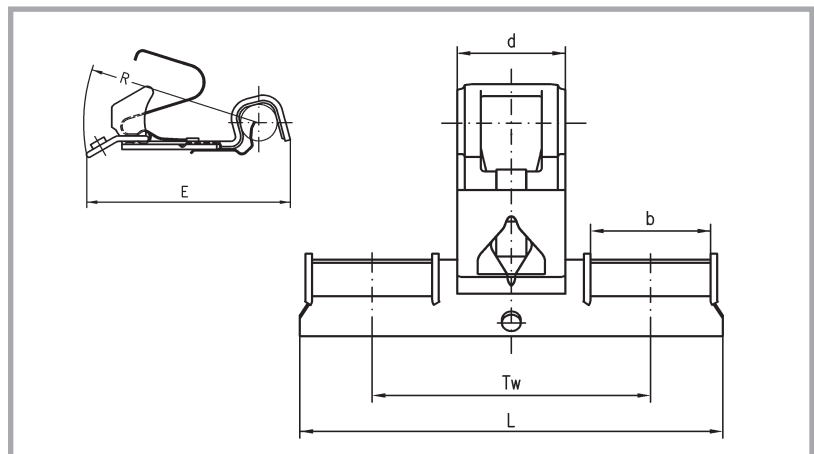
Long top apron cradle OH 1225

Application:
 Cotton ring spinning machine

Draft systems with **TEXParts weighting arms**

PK 3025 and PK 3035.

For spinning cotton, man-made fibres or blends of both types up to 60 mm fibre length.



*Long top apron cradle OH 1225**

Long top apron cradle OH 1225*

Types Ref. no.	Dimensions in mm						Top rollers LP 1003 ¹⁾	Top rollers LP 1002 ²⁾	Top aprons ³⁾
	Tw	L	b	d	R	E			
OH 1225-6001 674*	68,4	103	28,4	29,2	58,3	67,7	LP 1003-1256 596	LP 1002-1249 324	PR 028
OH 1225-6001 257*	75	114	32,4	29,2	58,3	67,7	LP 1003-1256 597	LP 1002-1248 601	PR 032
OH 1225-6001 675*	82,5	122	32,4	29,2	58,3	67,7	LP 1003-1256 598	LP 1002-1256 896	PR 032

* Available on request.

¹⁾ Apron top rollers with special sleeves.

²⁾ Top rollers for use as apron top rollers with cot. (Ref.nos. are for top rollers without cot). Cot quality according to customers' request. Diameter over cot = Ø 25 mm.

³⁾ Top aprons must be ordered as separate items.

Distance clips OLC

In combination with **OH 2022/ OH 62** the following distance clips listed below are recommended (1 pce. each per top apron cradle)

Distance clip	Colour
OLC -0964 118	yellow
OLC -0017 705	lilac
OLC -0964 119	white

In combination with **OH 2042/ OH 132** the following distance clips listed below are recommended (1 pce. each per top apron cradle)

Distance clip	Colour
OLC -0964 117	red
OLC -0964 118	yellow
OLC -0964 119	white

In combination with **OH 1225/ OH 122** the following distance clips listed below are recommended (1 pce. each per top apron cradle)

Distance clip	Colour
OLC -0964 118	yellow
OLC -0964 119	white
OLC -0017 627	grey

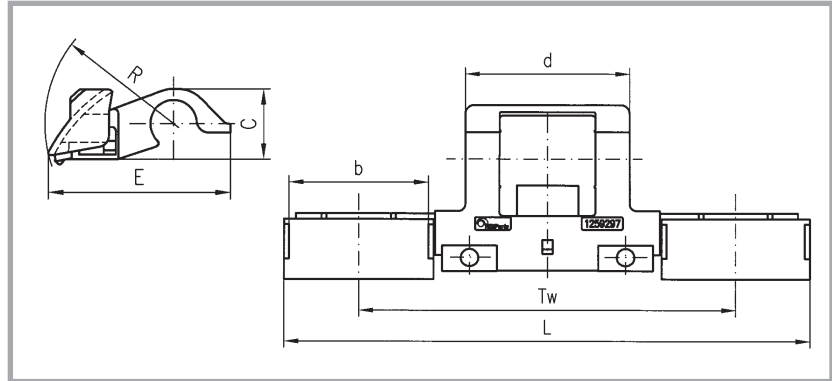
Distance clips OLC are not included in the standard supply of the top apron cradle and have to be ordered as separate items.

**Top apron cradles OH
for weighting arms of series PK 5000 and PK 1550/PK 1640**

 No. 83 · 15e - 01/07
Page 7/13

Short top apron cradles OH 5022
Application:
Cotton roving frame

 Draft systems with **TEXParts
weighting arms**

 PK 5025 - 3 - roller version
 PK 5035 - 3 - roller version
 PK 5025 - 4 - roller version
 PK 5035 - 4 - roller version
 PK 1550 - 3 - roller versions
 PK 1550 - 4 - roller version
 PK 1640 - 4 - roller version

Short top apron cradle OH 5022

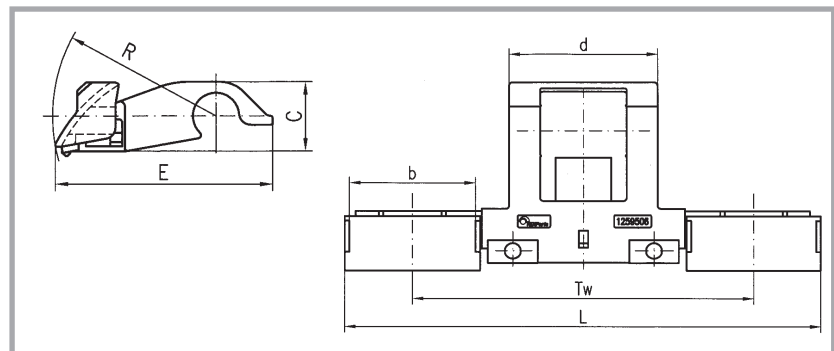
For spinning cotton, man-made fibres or blends of both types up to 40 mm fibre length.

Short top apron cradle OH 5022

Types Ref. no.	Dimensions in mm							Top rollers ¹⁾ LP 1015	Top aprons ²⁾
	Tw	L	b	c	d	R	E		
OH 5022-6004 092	100	143,4	40,4	18,8	48	35	49,6	LP 1015-0025 227	PR 40
OH 5022-1259 297	110	153,4	40,4	18,8	48	35	49,6	LP 1015-0025 228	PR 40

Medium top apron cradles OH 5042
Application:
Cotton roving frame

 Draft systems with **TEXParts
weighting arms**

 PK 5025 - 3 - roller version
 PK 5035 - 3 - roller version
 PK 5025 - 4 - roller version
 PK 5035 - 4 - roller version
 PK 1550 - 3 - roller versions
 PK 1550 - 4 - roller version
 PK 1640 - 4 - roller version

Medium top apron cradle OH 5042

For spinning cotton, man-made fibres or blends of both types up to 54 mm fibre length.

Medium top apron cradle OH 5042

Types Ref. no.	Dimensions in mm							Top rollers ¹⁾ LP 1015	Top aprons ²⁾
	Tw	L	b	c	d	R	E		
OH 5042-1259 506	110	153,4	40,4	19	48	45	59,6	LP 1015-0025 228	PR 4010

¹⁾ Top rollers for use as apron top rollers with cot. (Ref.nos. are for top rollers without cot). Cot quality according to customers' request. Diameter over cot = Ø 25 mm.

²⁾ Top aprons must be ordered as separate items.

Long top apron cradles OH 5245

Application:
Cotton roving frame.

Draft systems with **TEXParts weighting arms**

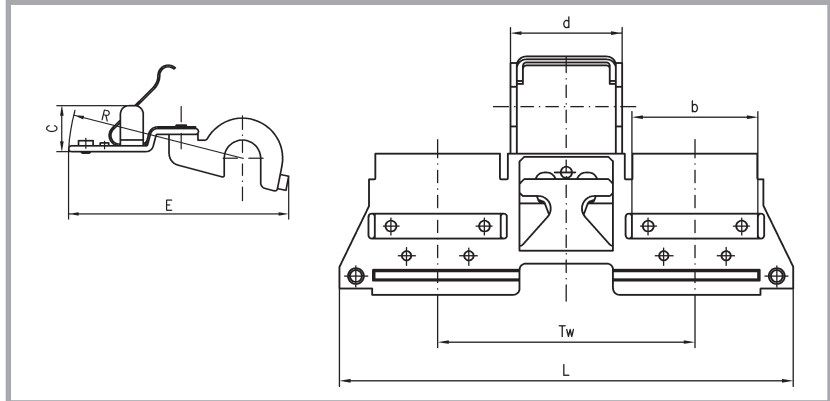
PK 5025-1259 471

PK 5035-1259 473

PK 1550 3-roller versions

PK 1640 4-roller version

For spinning cotton, man-made fibres or blends of both types up to 60 mm fibre length.



Long top apron cradle OH 5245

Long top apron cradle OH 5245

Types Ref. no.	Dimensions in mm							Top rollers ¹⁾ LP 1015	Top aprons ²⁾
	Tw	L	b	c	d	R	E		
OH 5245-1260 370	110	173	40,4	16	35,6	60,5	76	LP 1015-0025 228	PR 4011

¹⁾ Top rollers for use as apron top rollers with cot. (Ref.nos. are for top rollers without cot). Cot quality according to customers' request. Diameter over cot = Ø 25 mm.

²⁾ Top aprons must be ordered as separate items.

Distance clips OLC

We recommend (2 pcs. each per top apron cradle) the following distance clips for **OH 5022**, **OH 5042** and **OH 5245**

Distance clips	Colour
OLC-0964 104	(white)
OLC-0964 106	(black)
OLC-0964 108	(green)

Distance clips OLC are not included in the standard supply of the top apron cradle and have to be ordered as separate items.

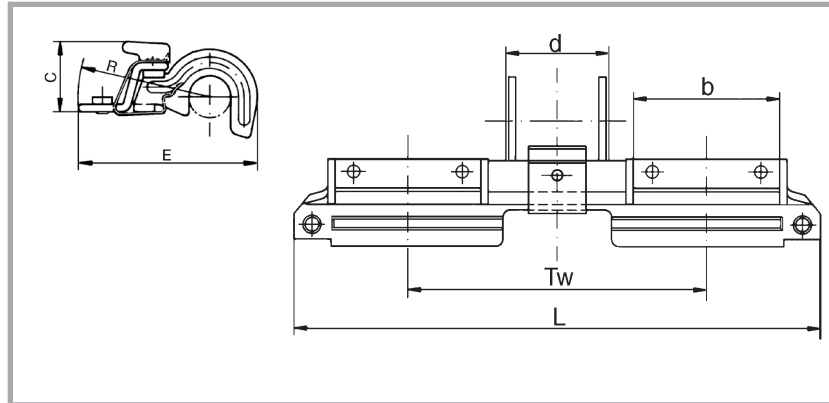
**Top apron cradles OH
for weighting arms of series PK 1500**

 No. 83 · 15e - 01/07
Page 9/13

Short top apron cradles OH 514
Application:
Cotton roving frame

 Draft systems with **TEXParts weighting arms**
PK 1500 3-roller versions
PK 1500 4-roller version.

For spinning cotton, man-made fibres or blends of both types up to 40 mm fibre length.

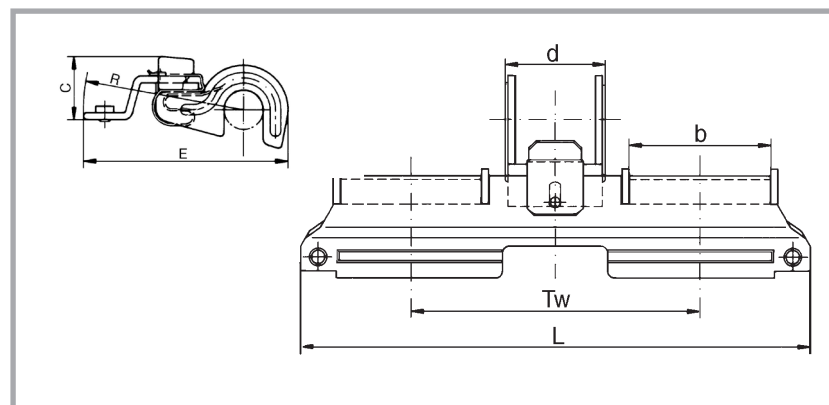

Short top apron cradle OH 514
Short top apron cradle OH 514

Types Ref. nos.	Dimensions in mm							Top rollers ¹⁾	Top aprons ²⁾
	TW	L	b	c	d	R	E		
OH 514-0962 745	100	163	40,4	18,5	28,6	34,5	47	LP 1017-0013 010	PR 40
OH 514-0962 746	110	173	40,4	18,5	28,6	34,5	47	LP 1017-0013 011	PR 40
OH 514-0962 747	130	193	40,4	18,5	28,6	34,5	47	LP 1017-0013 012	PR 40

Medium top apron cradles OH 534
Application:
Cotton roving frame

 Draft systems with **TEXParts weighting arms**
PK 1500 3-roller versions

For spinning cotton, man-made fibres or blends of both types up to 54 mm fibre length.


Medium top apron cradle OH 534
Medium top apron cradle OH 534

Types Ref. nos.	Dimensions in mm							Top rollers ¹⁾	Top aprons ²⁾
	TW	L	b	c	d	R	E		
OH 534-0962 764	100	163	40,4	17,8	28,6	45	57,5	LP 1017-0013 010	PR 4010
OH 534-0962 765	110	173	40,4	17,8	28,6	45	57,5	LP 1017-0013 011	PR 4010
OH 534-0962 766	130	193	40,4	17,8	28,6	45	57,5	LP 1017-0013 012	PR 4010

¹⁾ Top rollers for use as apron top rollers with cot. (Ref.nos. are for top rollers without cot).
Cot quality according to customers' request. Diameter over cot = Ø 25 mm.

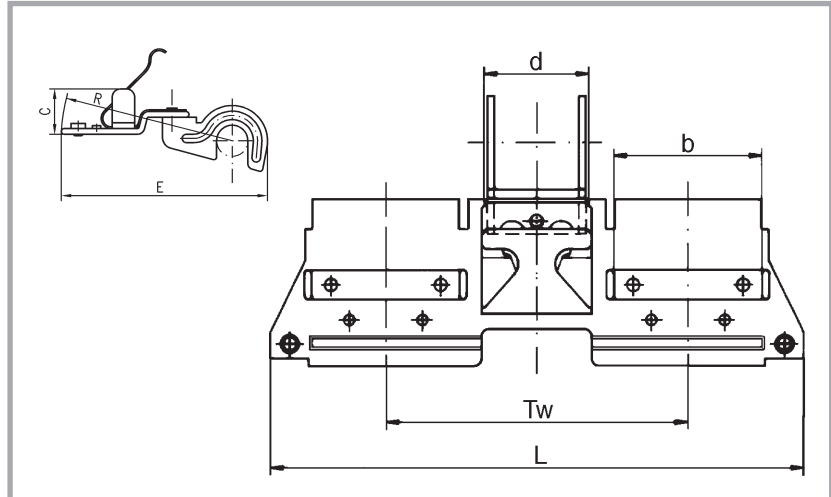
²⁾ Top aprons must be ordered as separate items.

Long top apron cradles OH 524

Application:
Cotton roving frame

Draft systems with **TEXParts weighting arms**
PK 1500 3-roller versions

For spinning cotton, man-made fibres or blends of both types up to 60 mm fibre length.



Long top apron cradle OH 524

Long top apron cradle OH 524									
Types	Dimensions in mm							Top rollers ¹⁾	Top aprons ²⁾
Ref. nos.	TW	L	b	c	d	R	E		
OH 524-0962 753	82,5	145,5	40,4	16	28,6	60,5	73	LP 1017-1256 712	PR 4011
OH 524-0962 755	110	173	40,4	16	28,6	60,5	73	LP 1017-0013 011	PR 4011

- ¹⁾ Top rollers for use as apron top rollers with cot. (Ref.nos. are for top rollers without cot).
Cot quality according to customers' request. Diameter over cot = Ø 25 mm.
- ²⁾ Top aprons must be ordered as separate items.

Distance clips OLC

We recommend (2 pcs. each per top apron cradle) the following distance clips for **OH 514**, **OH 534** and **OH 524**:

Distance clips OLC are not included in the standard supply of the top apron cradle and have to be ordered as separate items.

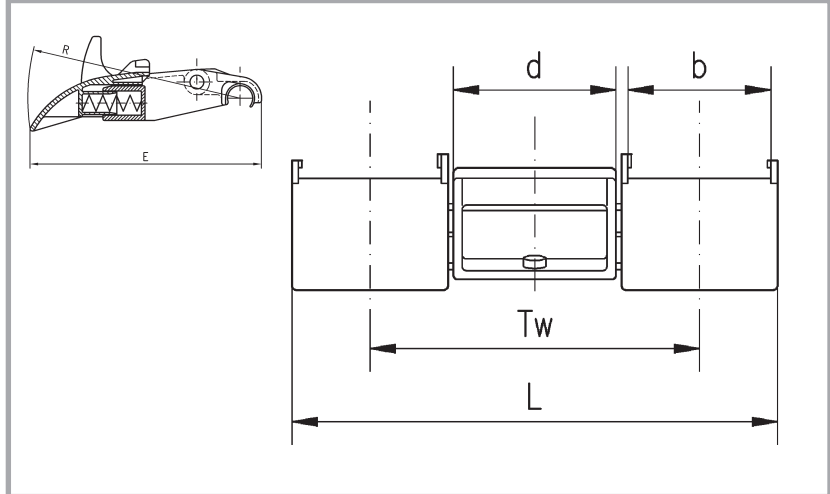
Distance clip	Colour
OLC-0964 104	(white)
OLC-0964 106	(black)
OLC-0964 108	(green)

**Top apron cradles OH
for weighting arms PK 6000**

 No. 83 · 15e - 01/07
Page 11/13

Top apron cradle OH 6022
Application:
Worsted ring spinning machine

 Draft systems with **TEXParts
weighting arms
PK 6000.**

 For spinning all kinds of wool,
man-made fibres or blends of
both types up to 200 mm fibre
length.

Top apron cradle OH 6022
Top apron cradle OH 6022

Types Ref. Nos.	Dimensions in mm				R	E	Top rollers ¹⁾	Top aprons ²⁾
	TW	L	b	d				
OH 6022-1254 311	75	110,5	32,4	37	88,8	98	LP 1014-1253 740	PR-3216
OH 6022-1254 312	82,5	126	40,4	37	88,8	98	LP 1015-1253 744	PR-4016

¹⁾ Top rollers for use as apron top rollers with cot. (Ref.nos. are for top rollers without cot).
Cot quality according to customers' request. Diameter over cot = Ø 33 mm

²⁾ Top aprons must be ordered as separate item.

Distance clips OLC

 We recommend (1 pcs. each per
top apron cradle) the following
distance clips for **OH 6022**:

 Distance clips OLC are not inclu-
ded in the standard supply of the
top apron cradle and have to be
ordered as separate items.

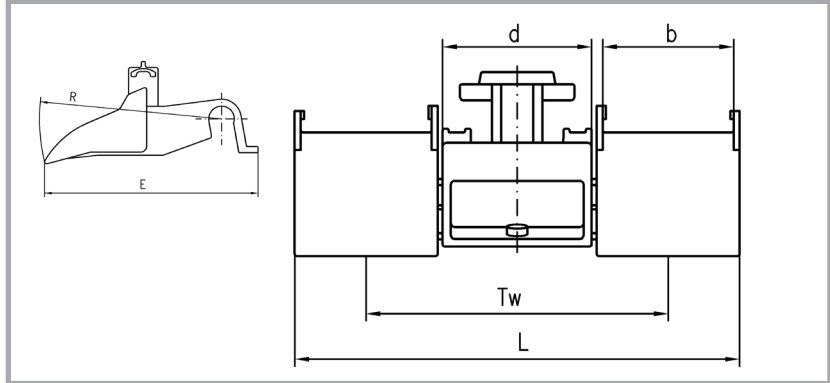
Distance clip	Colour
OLC -0964 120	(black)
OLC -0004 587	(beige)
OLC -0004 588	(green)

Top apron cradles OH 2402

Application:
Worsted ring spinning machine

Draft systems with **TEXParts weighting arms**
 PK1601 and PK 1660

For spinning all kinds of wool, man-made fibres or blends of both types up to 200 mm fibre length.



Top apron cradle OH 2402

Top apron cradle OH 2402

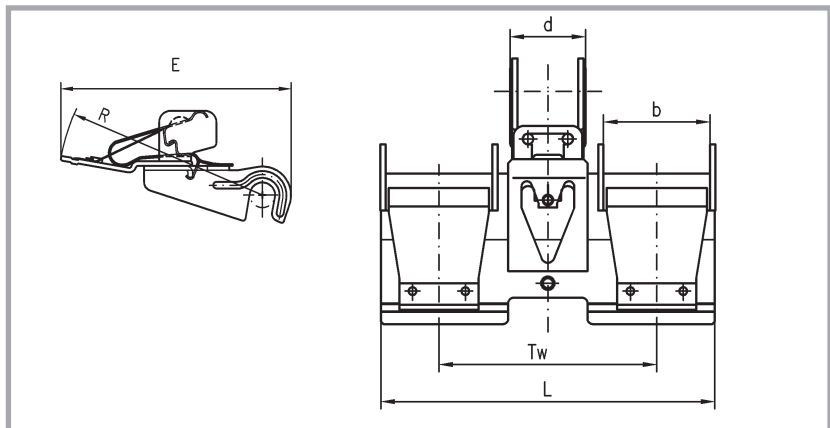
Types Ref. nos.	Dimensions in mm						Top rollers ¹⁾	Top aprons ²⁾
	TW	L	b	d	R	E		
OH 2402-1253 436	75	110,5	32,5	37	94,5	110,3	LP 1016-1256 711	PR 3217
OH 2402-1253 437	82,5	126,5	40,5	37	94,5	110,3	LP 1017-1256 712	PR 4017

Top apron cradles OH 554

Application:
Worsted ring spinning machine

Draft systems with **TEXParts weighting arms**
 PK1601 and PK 1660.

For spinning all kinds of wool, man-made fibres or blends of both types up to 200 mm fibre length.



Top apron cradle OH 554

Top apron cradle OH 554

Types Ref. nos.	Dimensions in mm						Top rollers ¹⁾	Top aprons ²⁾
	TW	L	b	d	R	E		
OH 554-0962 767	75	111	32,4	28,6	89,5	101	LP 1016-1256 711	PR 32/5
OH 554-0962 768	82,5	126,5	40,4	28,6	89,5	101	LP 1017-1256 712	PR 40/5
OH 554-0962 769	90	134	40,4	28,6	89,5	101	LP 1017-1256 713	PR 40/5

¹⁾ Top rollers for use as apron top rollers with cot. (Ref.nos. are for top rollers without cot).

Cot quality according to customers' request. Diameter over cot = Ø 48 mm

²⁾ Top aprons must be ordered as separate items.

Distance clips OLC

We recommend (1 pcs. each per top apron cradle) the following distance clips for **OH 2402** and **OH 554**:

Distance clip	Colour
OLC-0964 120	(black)
OLC-0004 587	(beige)
OLC-0004 588	(green)

Distance clips OLC are not included in the standard supply of the top apron cradle and have to be ordered as separate items.

List of top aprons

General designation	Dimensions in mm			Application	Diam. of apron top roller
	Inner Diam.	Width	Thickness		
PR 28-0998 113	37,0	27,8	1,0	OH 2022	25
PR 32-0997 533	37,0	31,8	1,0	OH 62 ($T_w = 90$)	25
PR 40-0997 575	37,0	39,8	1,0	OH 5022 OH 514	25
PR 283-0002 487	41,5	27,8	1,0	OH 132 ($T_w = 68,4$)	25
PR 323-0998 232	41,5	31,8	1,0	OH 132 ($T_w = 75; 82,5$)	25
PR 4010-0002 503	43,5	39,8	1,0	OH 5042 OH 534	25
PR 028-0002 484	51,3	27,8	1,1	OH 1225 OH 122 ($T_w = 68,4$)	25
PR 032-0002 485	51,3	31,8	1,1	OH 122 ($T_w = 75; 82,5$)	25
PR 4011-0002 504	52,7	39,8	1,1	OH 5245 OH 524	25
PR 2813-1251 565	42,1	25,8	1,0	OH 2042	25
PR 3216-1253 678	75,8	31,8	1,1	OH 6022 ($T_w = 75$)	33
PR 4016-0022 858	75,8	39,8	1,1	OH 6022 ($T_w = 82,5$)	33
PR 3217-1252 275	83,2	31,8	1,1	OH 2402 ($T_w = 75$)	48
PR 4017-1252 276	83,2	39,8	1,1	OH 2402 ($T_w = 82,5$)	48



Accotex-TEXParts GmbH
 Maria-Merian-Strasse 8
 70736 Fellbach
 Germany
 Tel.: +49 (711) 58 521-0
 Fax: +49 (711) 58 521-59
<http://www.texparts.de>
<http://www.accotex-texparts.de>
 e-mail: info@texparts.de