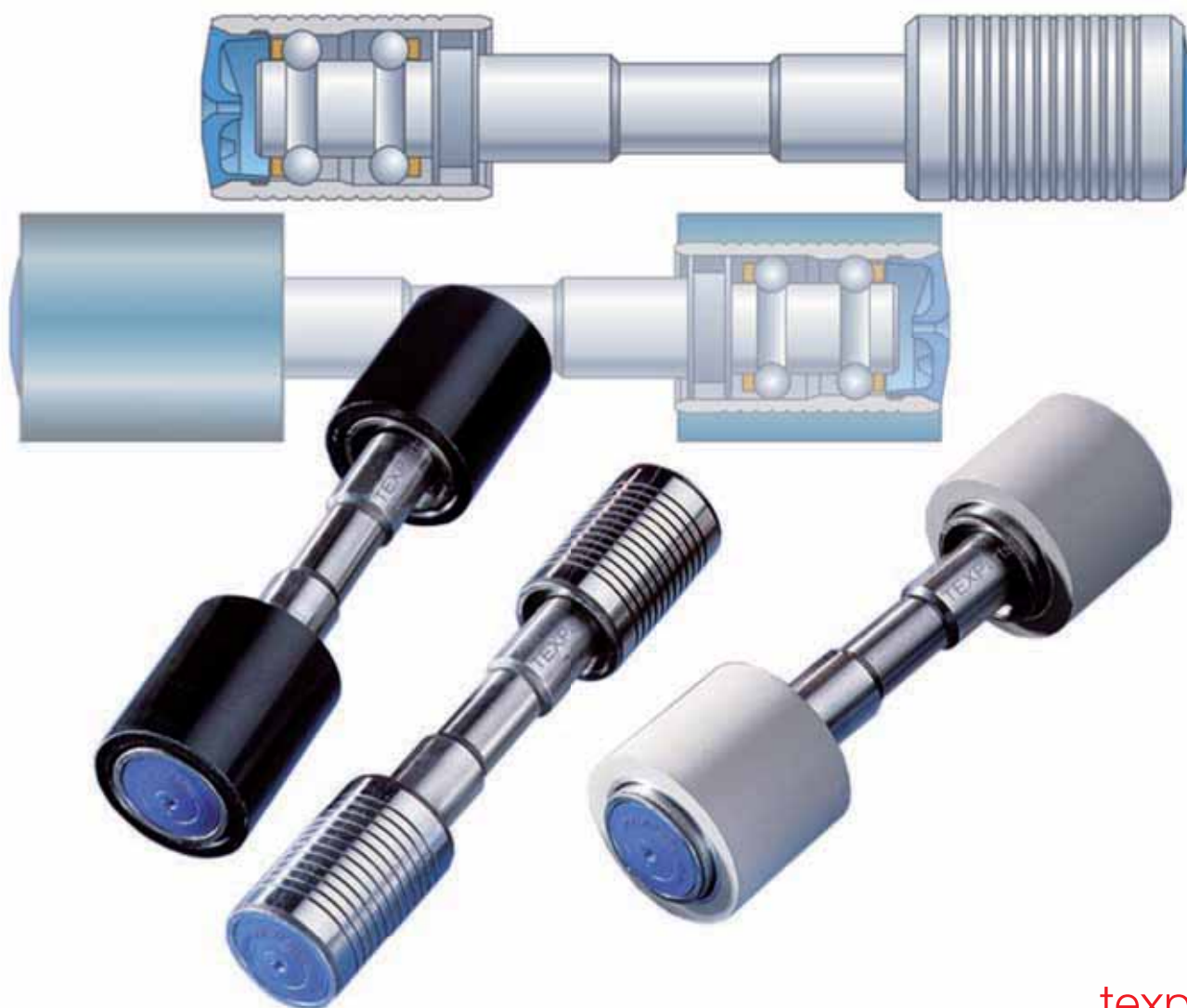


Top Rollers LP 1000 Series

High quality level for modern spinning mills



High quality, long relubrication intervals

Increase the quality level of your spinning mill

During the spinning process the quality of the top rollers used in the draft system is of vital importance for the quality of the yarn produced. With the top rollers of the LP 1000 series you create the preconditions for an optimized drafting.

Top rollers LP 1000 series with double-row ball bearings are used as rear and front top rollers as well as top apron rollers in draft equipment of ringspinning machines and roving frames, both for cotton and worsted spinning.

A wide variety of versions and gauges offers the ideal solution for every application.



LP 1002



LP 1015



LP 1003

Convincing advantages

Top rollers of LP 1000 series are products of the latest up-to-date bearing technology and are characterized by the following features:

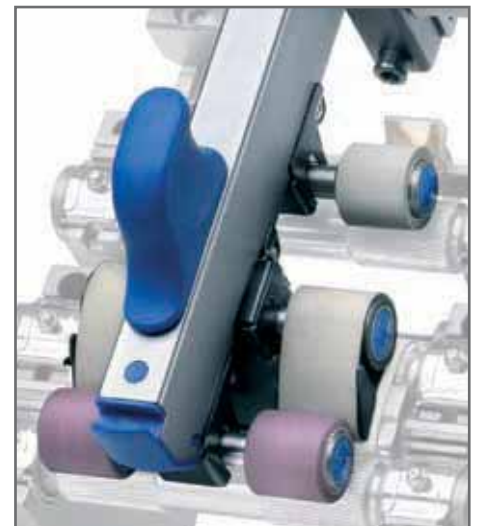


Rear and front top rollers

- Small roller diameters
- Long service life at high load capacity
- Sturdy, high quality ball bearings
- Precise running behaviour
- Completely hardened axles
- Ground saddle for precise seating in the weighting arm
- Minimised friction
- Reliable bearing seal
- Long service intervals
- Simple relubrication

Apron rollers with special sleeves

- Corrosion free running surface for the aprons
- Maintenance-free due to lifetime lubrication
- Optimised adjustment to top apron cradles OH 2022 / OH 2042



Range of Top Rollers

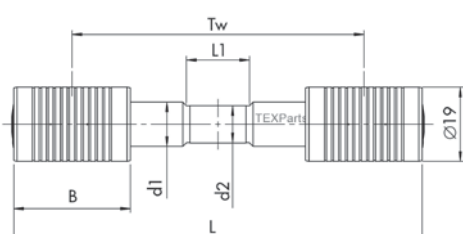
LP 1000 Series

Front and rear top rollers

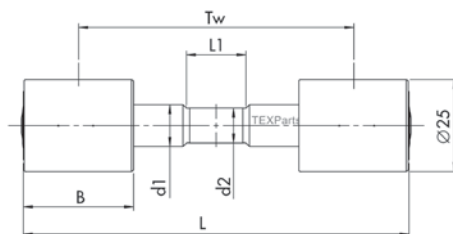
Series	Ref.-No.	Tw (mm)	d1	d2	L1	L	B	Application
LP 1002	1249324	68.4	11.36	9.5	16.2	98.4	30	Short staple ringspinning machines PK 3000 PK 2100 PK 2000
	1248379	75	11.36	9.5	16.2	105	30	
	1248382	82.5	11.36	9.5	16.2	112.5	30	
	1256898	90	11.36	9.5	16.2	120	30	
	0956274	100	11.36	9.5	16.2	130	30	
LP 1002	1248601	75	11.36	9.5	16.2	109	34	Long staple ringspinning machines PK 6000 PK 1660 PK 1601
	1256896	82.5	11.36	9.5	16.2	116.5	34	
LP 1014	1253740	75	12.6	11	22.5	109	34	Short staple roving frames PK 5000 PK 1550 / PK 1500 PK 1640 / PK 1600
	1253741	82.5	12.6	11	22.5	116.5	34	
	1253742	90	12.6	11	22.5	124	34	
	0025222	100	12.6	11	22.5	134	34	
LP 1015	1253744	82.5	12.6	11	22.5	122.5	40	Short staple roving frames PK 5000 PK 1550 / PK 1500 PK 1640 / PK 1600
	1253745	90	12.6	11	22.5	130	40	
	0025227	100	12.6	11	22.5	140	40	
	0025228	110	12.6	11	22.5	150	40	
	0025229	130	12.6	11	22.5	170	40	

Apron top rollers

Series	Ref.-No.	Tw (mm)	d1	d2	L1	L	B	Application
LP 1003	1256596	68.4	11.36	9.5	16.2	98.4	30	Short staple ringspinning machines PK 3000 PK 2100 PK 2000
	1256597	75	11.36	9.5	16.2	105	30	
	1256598	82.5	11.36	9.5	16.2	112.5	30	
	1256599	90	11.36	9.5	16.2	120	30	
LP 1015	1253744	82.5	12.6	11	22.5	122.5	40	Long staple ringspinning machines PK 6000 Short staple roving frames PK 5000 / PK 1550 / PK 1640
	1253745	90	12.6	11	22.5	130	40	
LP 1016	1256711	75	12.6	11	28.2	109	34	Short staple roving frames
	1256712	82.5	12.6	11	28.2	122.5	40	
LP 1017	1256713	90	12.6	11	28.2	130	40	Long staple ringspinning machines PK 1660 / PK 1601 PK 1500
	0013010	100	12.6	11	28.2	140	40	
	0013011	110	12.6	11	28.2	150	40	
	0013012	130	12.6	11	28.2	170	40	



Dimensions of LP 1002 / LP 101x



Dimensions of LP 1003

All top rollers are delivered without cot. If desired Accotex Texparts will supply top rollers with ready ground cots. Cot quality can be determined by the customer himself.

Oerlikon Accotex Texparts GmbH

Maria-Merian-Strasse 8

70736 Fellbach

Germany

T +49 (0) 711 585 21 0

F +49 (0) 711 585 21 59

info-texparts@oerlikon.com

www.components.oerlikontextile.com